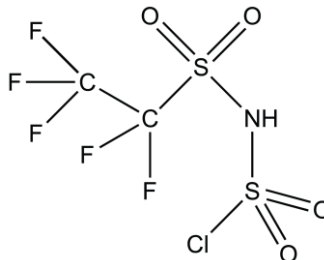


(CHLOROSULFONYL)(PENTAFLUOROETHANESULFONYL)IMIDE

CAS Number: N/A
Molecular Formula: C₂HClF₅NO₄S₂
Molecular Weight: 297.61 g/mol



AppearanceColorless, yellowish to brownish liquid

¹⁹F NMR SpectrumConforms to structure

Purity (¹⁹F NMR)min. 99.0 %